

1

2

3

4

A

A

B

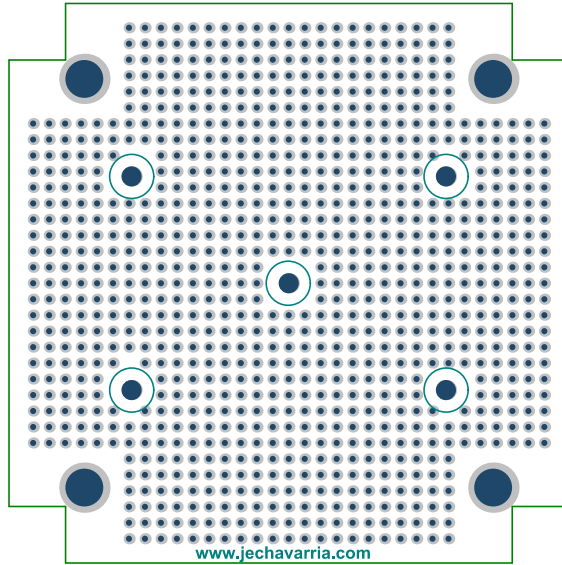
B

C

C

D

D



www.jechavarria.com

ENGINEER: jechavarria	TITLE: Breadboard to use with Famatel 3011 Boxes www.jechavarria.com		
PCB DESIGNER: jechavarria	DATE: 27/06/2014	LAYER Top Layer	REV: 01
FILE NAME: PCB_FMT_BREADBOARD.pcb	DWG NO:	SCALE: 1:1	Units: mm

1

2

3

4

1

2

3

4

A

A

B

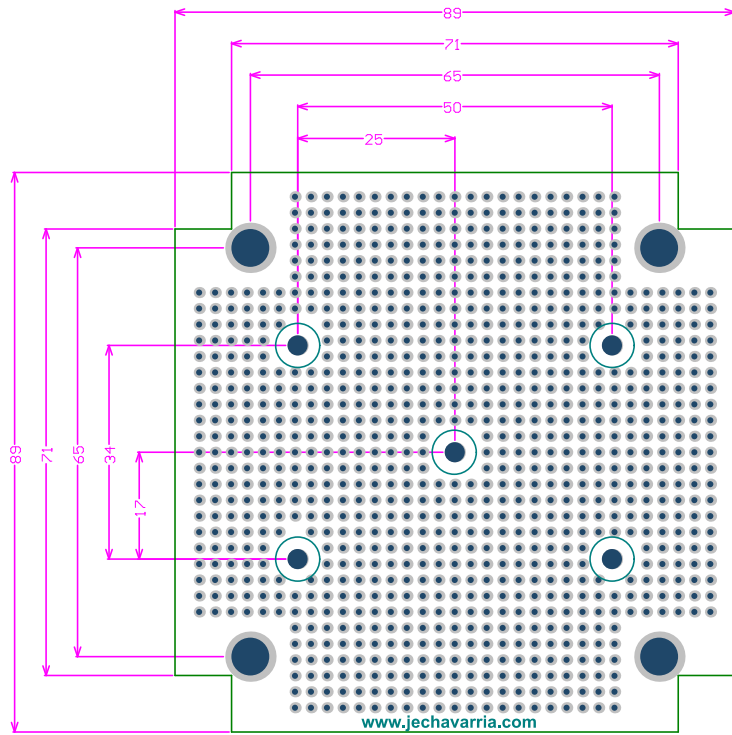
B

C

C

D

D



www.jechavarria.com

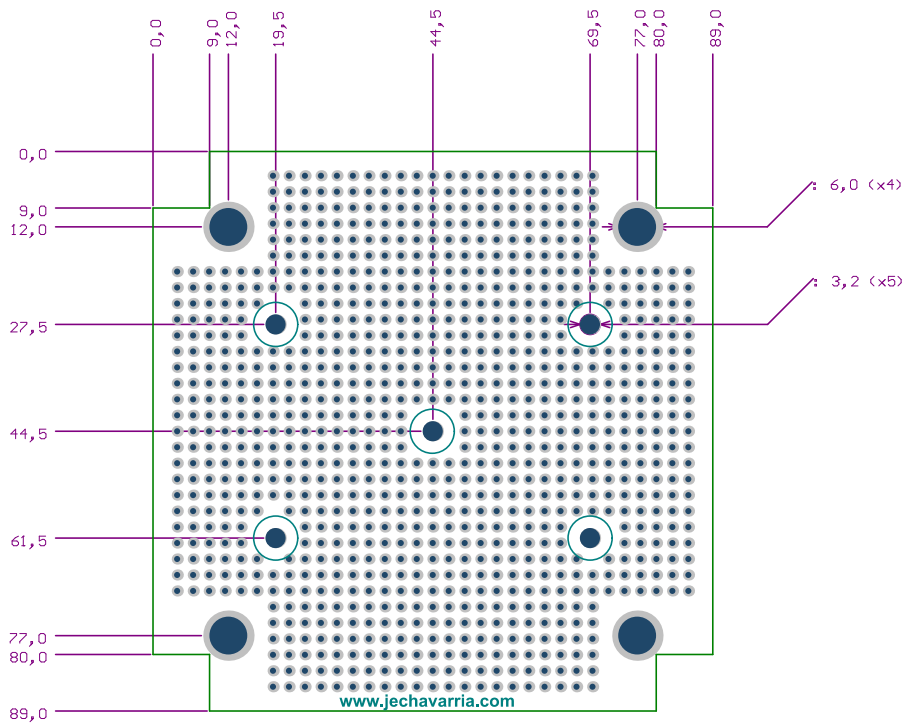
ENGINEER: jechavarria	TITLE: Breadboard to use with Farnatel 3011 Boxes www.jechavarria.com		
PCB DESIGNER: jechavarria	LAYER Mechanical Layer 5	REV: 01	
DATE: 27/06/2014	DWG NO: Outline Dimensions	SCALE: 1:1	Units: mm
FILE NAME: PCB_FMT_BREADBOARD.pcb			

1

2

3

4



www.jechavarria.com

ENGINEER:
jechavarria

PCB DESIGNER:
jechavarria

DATE:
27/06/2014

FILE NAME:
PCB_FMT_BREADBOARD.pcb

TITLE:

Breadboard to use with Farnatel 3011 Boxes
www.jechavarria.com

LAYER
Mechanical Layer 6

DWG NO:
Distances and hole diameters

REV:
01

SCALE:
1:1

Units:
mm

1

2

3

4

A

A

B

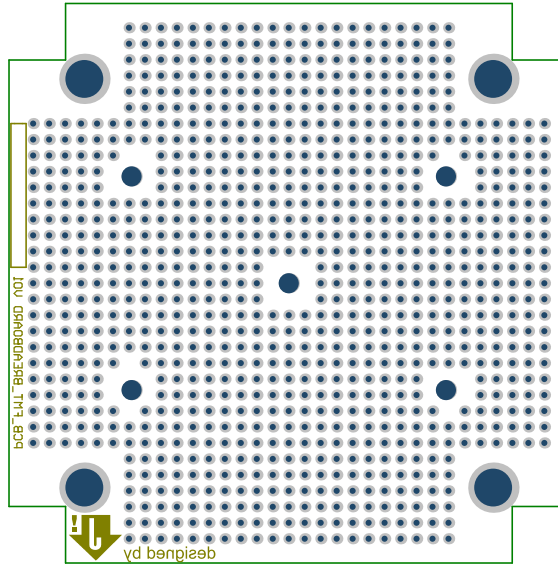
B

C

C

D

D



www.jechavarria.com

ENGINEER:
jechavarria

PCB DESIGNER:
jechavarria

DATE:
27/06/2014

FILE NAME:
PCB_FMT_BREADBOARD.pcb

TITLE:
Breadboard to use with Famatel 3011 Boxes
www.jechavarria.com

LAYER
Bottom Layer

DWG NO:

REV:
01

SCALE:
1:1

Units:
mm

1

2

3

4